



Instructions

Petals - diagram A.

Cast on 5 sts and work with diagram A.
Make 5 Petals.

Middle petals - diagram B.

Cast on 14 sts and work with diagram B.

Little Middle - diagram C.

Cast on 3 sts and follow diagram C.

Leaf - diagram D.

Cast on 5 sts and follow diagram D. Repeate 5 - 6 Rows 19 times, then work Rows 7, 8, 9.

Stem.

Cast on 2 sts, work i-cord: * K2, movie sts from right to left needle* continue work whitout turning for 7 cm. Increase 2 sts and work i-cord with 4 sts for 12 cm (or desired length of stem's strong part), K4 tog,bind off.



diagram A

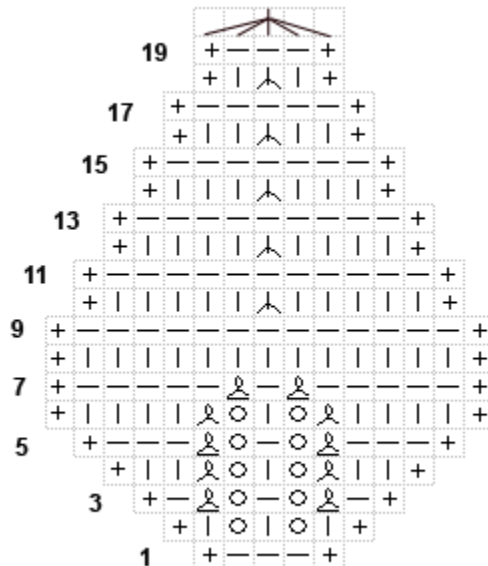


diagram B

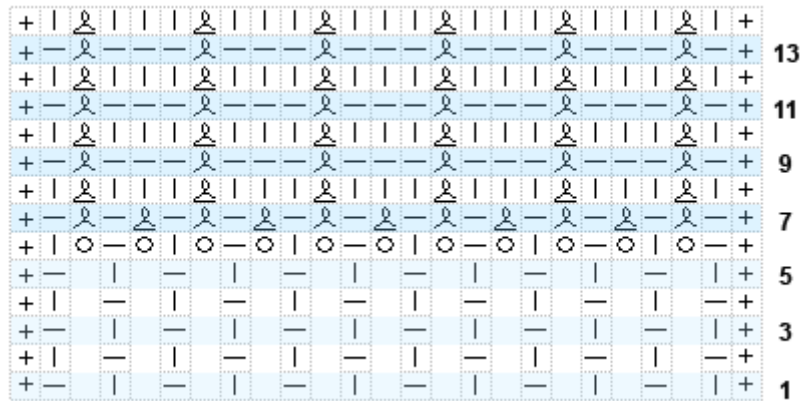


diagram C

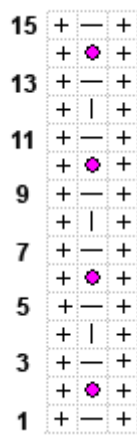
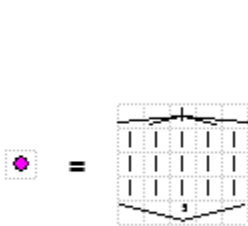
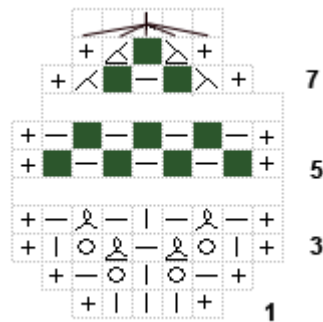


diagram D



+ - edge stitch: the slip first stitch and to knit last stitch purlwise (with yarn in front) on the wrong side.

■ - YO and movie next sts from left to right needle, in next row purl this sts with YO together.

