



Instructions

Big Wings.

Cast on 9 sts and work with diagram **A**.

Small Wings.

Cast on 7 sts and work with diagram **B**.

Body.

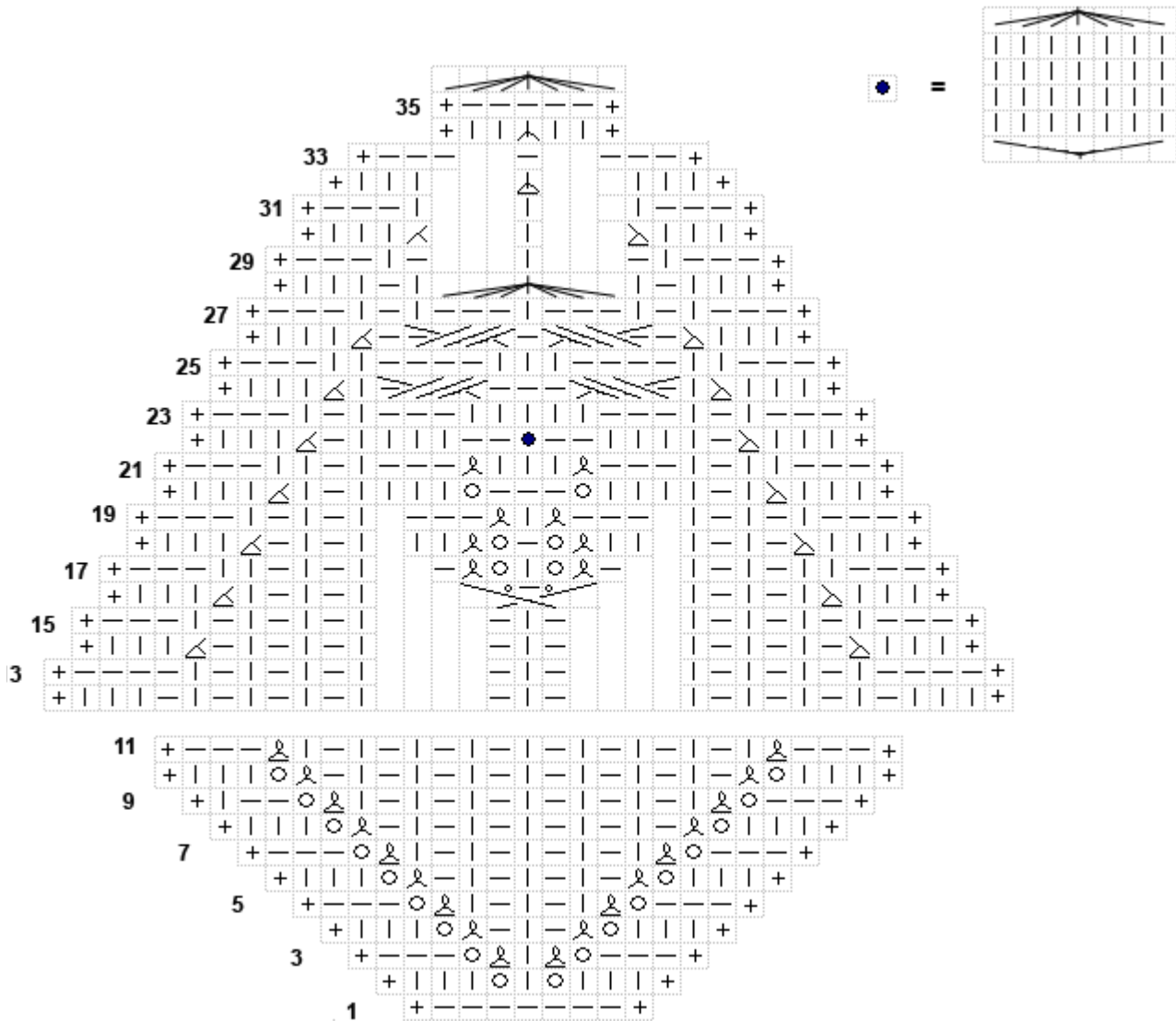
Cast on 5 sts and work with diagram **C**.

Antennae.

Cast on 2 sts, work i-cord: * K2, move sts from right to left needle* continue work without turning for desired length. Make 2 antennae.



diagram A



+ - edge stitch: the slip first stitch and to knit last stitch purlwise (with yarn in front) on the wrong side.

diagram B

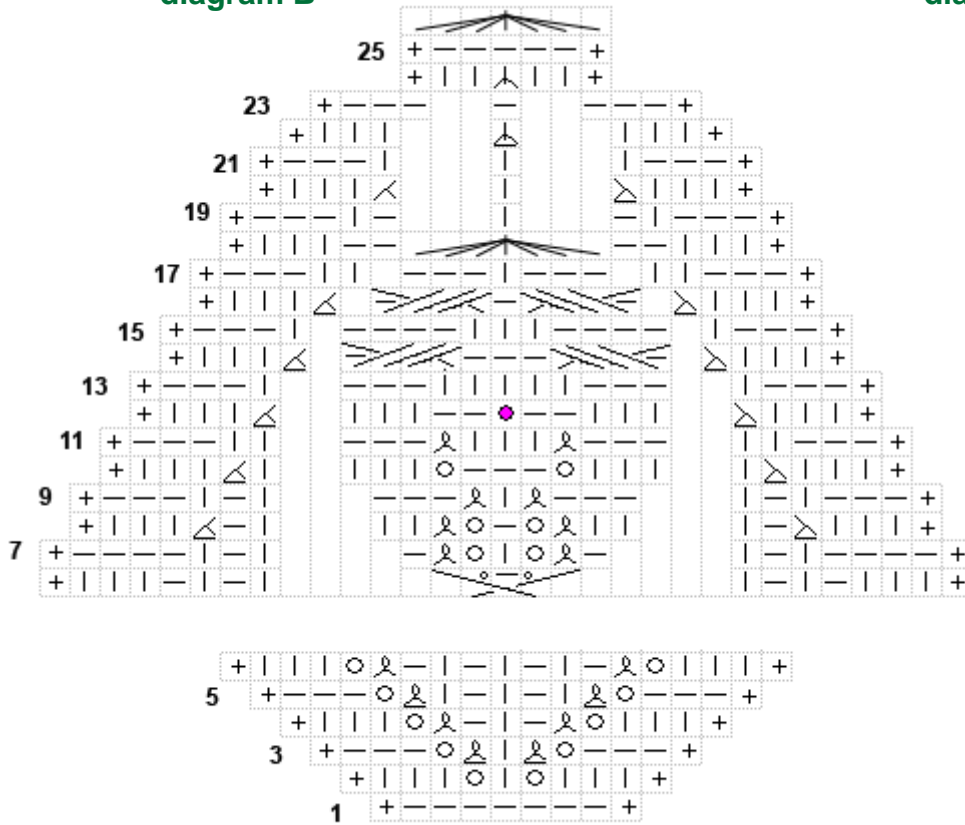


diagram C

