

## Instructions

### Petals - diagram A.

Cast on 10 sts.

1 Row (WS): K across.

2 Row: 6 bind off (knit st), K2.

3 Row: P2, YO7.

4 Row: K twisted 6, K2.

5 Row: K across.

6 Row: 6 bind off (knit st), K2.  
Repeat: 3 - 6 rows 23 times.



### Middle part - diagram B.

Cast on 28 sts and work with diagram B using five double-pointed needles. After 11 Row knit all stitch together and fasten the yarn.

Keep stuff with absorbent cotton.

### Stem with leaf - Diagram C & D.

For the Stem cast on 30 sts and work K across in first row, in second row bind off knit st.

For the Leaf cast on the Stem 4 sts (WS), turn and work 1 Row: knit second stitch on left needle, YO and then knit the first stitch. Continue work with Diagram D.

### diagram A

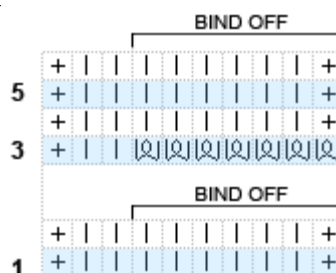


diagram B

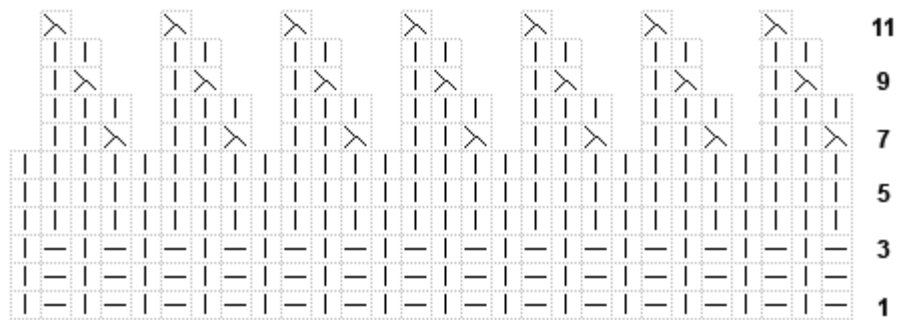


diagram C

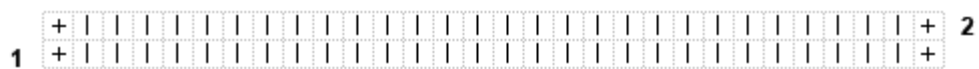
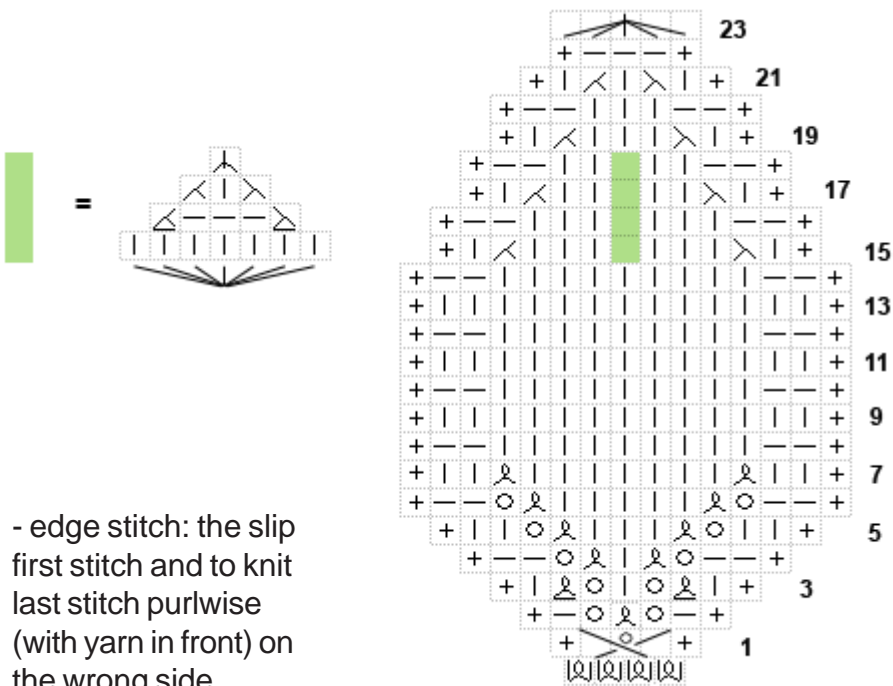


diagram D



+ - edge stitch: the slip first stitch and to knit last stitch purlwise (with yarn in front) on the wrong side.

