

Instructions

Big petals - diagram A.

Cast on 10 sts.

1 Row (WS): P2, *YO P1, repeate from* 5 times.

2 Row: *K1, K twisted repeate from* 5 times, K2.

3 Row: P2, *YO P1, repeate from* 11 times.

4 Row: 24 bind off (knit st),YO work wiht twisted knit, K2.

5 Row: P2, YO7.

6 Row: K twisted 6, K2.

7 Row: P2, *YO P1, repeate from* 5 times.

8 Row: *K1, K twisted repeate from* 5 times, K2.

9 Row: P2, *YO P1, repeate from* 11 times.

10 Row: 24 bind off (knit st),YO work wiht twisted knit, K2.
Repeate: 5 - 10 rows 3 times.

Middle petals - diagram B.

Cast on 28 sts and work with diagram B using five double-pointed needles. After 11 Row knit all stitch together and fasten the yarn.

Middle part - diagram C.

Cast on 3 sts.

1 Row (WS): P1.

2 Row: Bibble from 7 sts.

3 row: purl all sts together and fasten the yarn.



Leaf - diagram D.

Stem.

Cast on 2 sts, work i-cord: * K2, movie sts from right to left needle* continue work whitout turning for 10 cm (or desired length). Increase 2 sts and work i-cord with 4 sts for 12 cm (or desired length of stem's strong part), K4 tog, bind off.

Finishing: twist flower into ring and sew back. Sew Middle Patels with Middle part to Big petals together (see picture). Sew Leaf to Stem.

diagram A

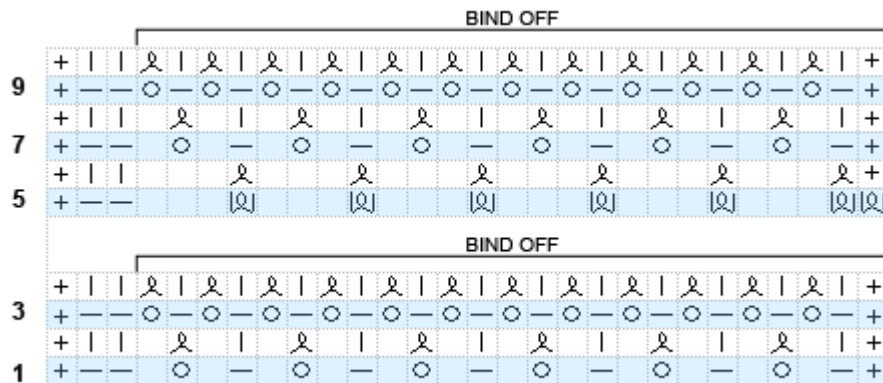


diagram B

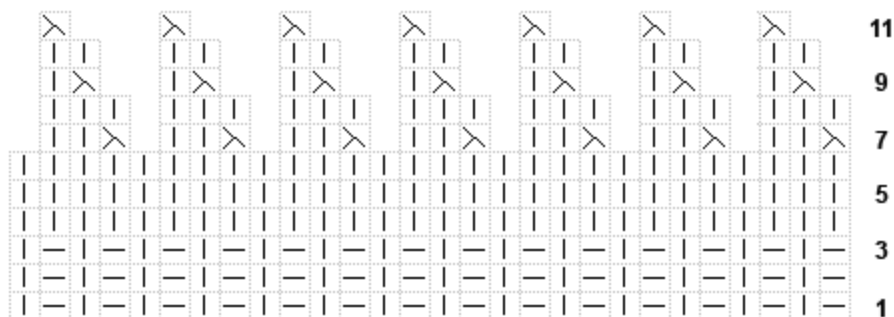


diagram C

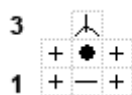
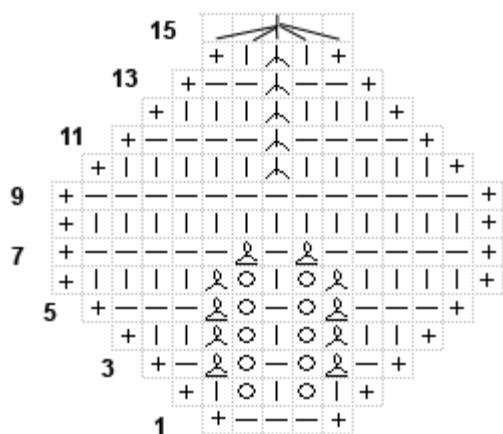


diagram D



+ - edge stitch: the slip first stitch and to knit last stitch purlwise (with yarn in front) on the wrong side.

