

## Instructions

### Big Rose.

Cast on 20 sts.

1 Row (WS): purl across.

2 Row: K1 YO, accross edge stitch  
- K1.

3,5 Rows: purl across (YO work  
wiht twisted purl).

4,6 Rows: K1 YO, accross edge  
stitch - K1.

7 Row: P8 bind off (purl st), \* 1 long stitch in 1 Row below, purl this long sts and next sts together and bind off, P7 bind off; repeate from \* 5 times. \* 1 long stitch in 1 Row below, purl this long sts and next sts together and bind off, P10 bind off; repeate from \* 3 times. \* 1 long stitch in 1 Row below, purl this long sts and next sts together and bind off, P13 bind off; repeate from\* to END.

### Small rose.

Cast on 11 sts.

Work 4 first rows of Big rose.

5 Row: P6 bind off (purl st), \* 1 long stitch in 1 Row below, purl this long sts and next sts together and bind off, P5 bind off; repeate from \* 4 times.\* 1 long stitch in 1 Row below, purl this long sts and next sts together and bind off, P7 bind off; repeate from \* 1 time.\* 1 long stitch in 1 Row below, purl this long sts and next sts together and bind off, P9 bind off; repeate from\* to END.

### Rose Bud.

Cast on 8 sts.

Work 4 first rows of Big rose.

5 Row: bind off across END.



**Stem.**

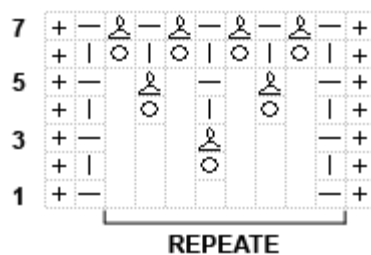
Cast on 2 sts, work i-cord: \* K2, move sts from right to left needle\* continue work without turning for 7 cm ( or desired length). Next **3 rows** work:: 1K, YO. In next rows YO work like K twisted. Bind off.

**Leaf - diagram B.**

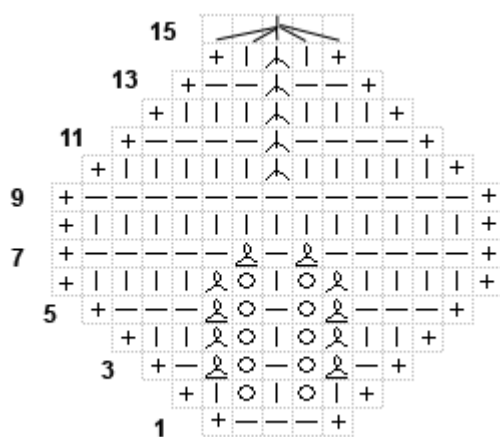
**Finishing:** twist roses and bud into spiral and sew back to hold spiral in place. Sew bud and leaf to stem.

The diagram A shows the increasing of stitches to one stitch of 1 row.

**diagram A**



**diagram B**



+ - edge stitch: the slip first stitch and to knit last stitch purlwise (with yarn in front) on the wrong side.

