

Instructions

Petals - diagrams A & B.

With violet yarn cast on 21 sts.
Work in st st for 3 rows.

1, 3 Rows (WS): purl across.

2 Row: knit across.

4 Row: * K1, 4 st increase into a single st and one more 4 st increase into next single st.

Turn and make 15 short rows:

1,3,5,7,9,11,13,15: purl across.

2,4,6,8,10,12,14: knit across.

16 row: K4 tog, K4 tog.

Continue work in general row* to END.

5 Row: knit across.

6, 8 Rows with pink yarn: K1 P1 to END.

7 Row: P1 K1 to End

9 Row: * P1 YO K1 YO* to END.

10,12,14,16 Row: P1 K twisted 1, * P3 K twisted 1* to END.

11,13,15 Row: K3 P twisted 1 to END.

17 Row: K3 bind off (knit stitch), P twisted 1 bind off (twisted purl st) to END.

Leaf - diagram C.

Stem.

Cast on 2 sts, work i-cord: * K2, movie sts from right to left needle* continue work whitout turning for 10 cm (or desired length of twisted into spiral steam). Increase 2 sts and work i-cord with 4 sts for 12 cm (or desired length of stem's strong part), K4 tog, bind off.

Finishing: Sew first and last petals in 1,2 rows. Twist midle part of flower into spiral and sew back to hold spiral in place. Sew leaf and Stem.



diagram B

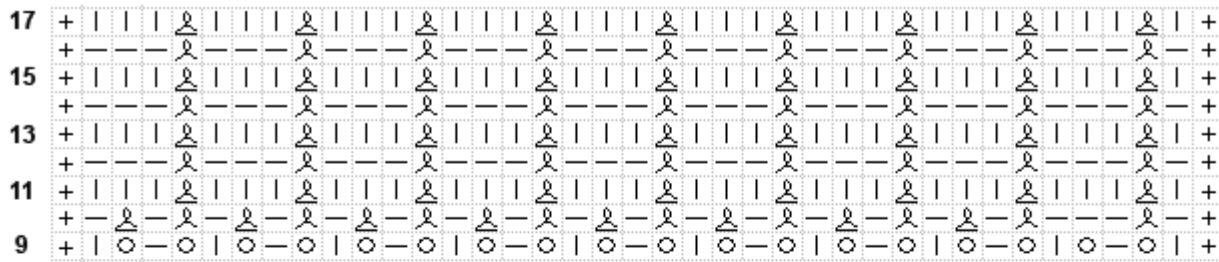


diagram A

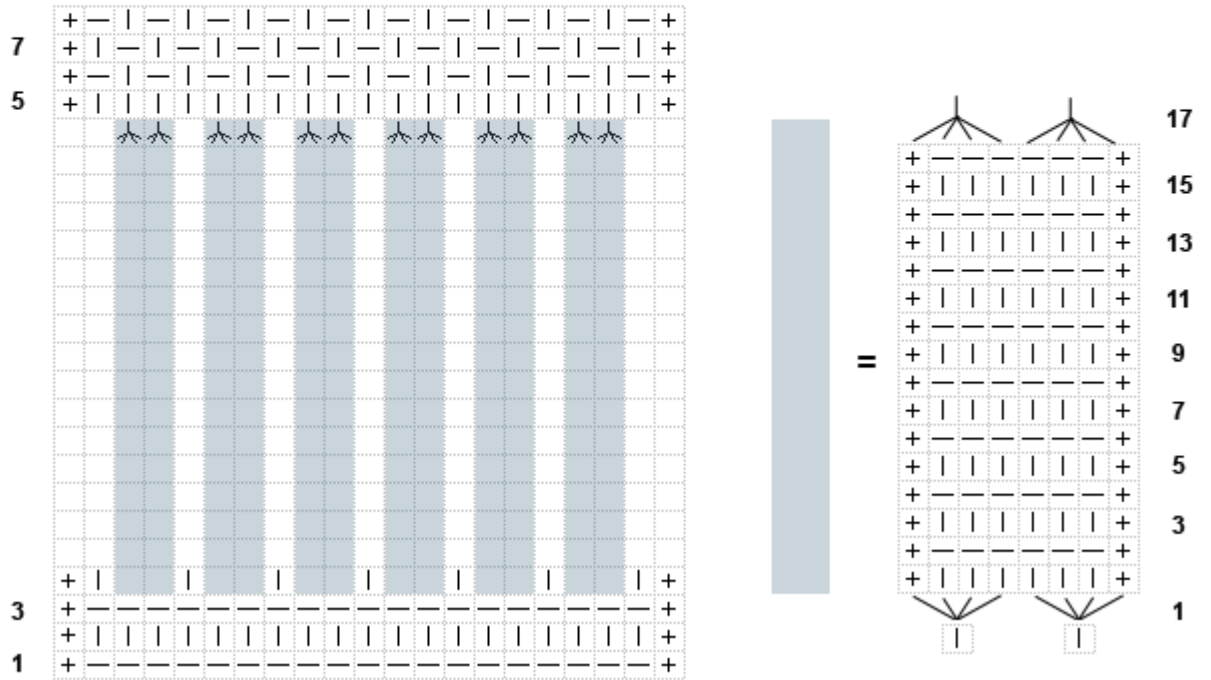
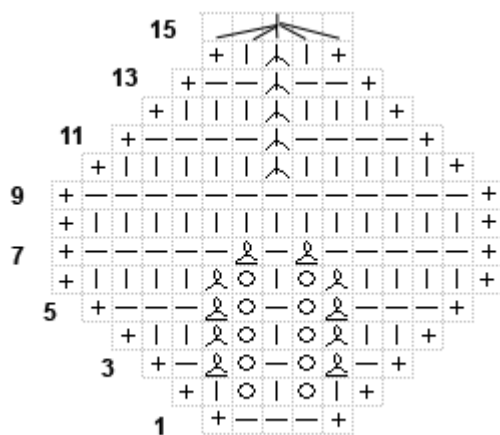


diagram C



+ - edge stitch: the slip first stitch and to knit last stitch purlwise (with yarn in front) on the wrong side.